



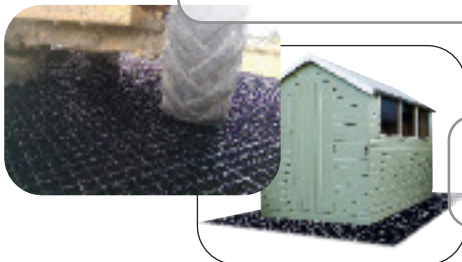
## Making life **EASY**

solutions

results

answers

remedies



# Jointing made *EASY*



- Weather will not stop play! - Rain or shine it goes in fine



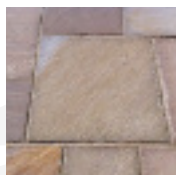
- Fast and easy to use - up to 20 times quicker than conventional methods



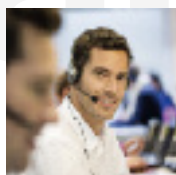
- No waste and Environmentally friendly - Meets SUDS requirements  
Leftover product can be kept in the tub, under 50mm of water, for up to a year



- Aesthetically pleasing - available in 5 great colours



- Technically advanced formula - strong yet flexible joint that will last for years



- Full customer support - website, comprehensive literature, telephone helpline and demonstration videos

**12.5kg**



For more details and comprehensive instructions please refer to the **EASYJoint** tub and leaflet inside or visit [www.azpects.co.uk](http://www.azpects.co.uk)

# Rain or shine it goes in fine



Protect your patio with the **EASYSeal** range

We focus on the development, production and distribution of a range of specialist products designed to make the job in hand either easier, quicker or both!

At the same time, we are ever conscious of the growing demand for environmentally safe or neutral products and work hard at delivering the best solution with as minimal environmental impact as possible.



## Look it's **EASY**

The following guide is a brief overview to show **EASYJoint**'s ease of use and should not be solely relied on as installation instructions. Detailed guidance including suitability for use, precautionary advice, product information and product expectations is available online (including a demonstration video) and inside each tub. Visit [www.azpects.co.uk](http://www.azpects.co.uk) before using **EASYJoint**.

It's **EASY** -  
Check out our  
on-line  
demonstration  
video



- 1.** Saturate the paving -  
The wetter the better

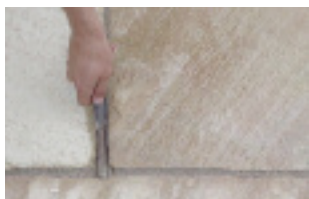
- 2.** Open one tub at a time - form a slurry



- 3.** Use a spray of water to help **EASYJoint** into the joints



- 4.** Clear any residue **EASYJoint** as you go by washing with plenty of water, top up any sagging joints



- 5.** Optional: Once the water has drained, to get a smoother finish, point (or strike) the joint. Never allow the surface to dry out with the compound on the surface

- 6.** Cover any leftover product, in the tub, with at least 50mm of water. Subject to environmental conditions It will remain stable and safe to use for up to 12 months



**COVERAGE** 1 x 12.5Kg Tub of **EASYJoint** will cover approximately the following areas\*

Paving Size (mm)	Joint Size (mm) 30 x 5	Paving Size (mm)	Joint Size (mm) 30 x 8
600 x 600	13.5 m <sup>2</sup>	600 x 600	8.5 m <sup>2</sup>
600 x 450	11.5 m <sup>2</sup>	600 x 450	7.0 m <sup>2</sup>
450 x 450	10.0 m <sup>2</sup>	450 x 450	6.0 m <sup>2</sup>
600 x 300	9.0 m <sup>2</sup>	600 x 300	5.5 m <sup>2</sup>

\* Note: this is only a guide. Because accuracy of gap width and depth cannot be uniformly guaranteed, the above table is only a reasonable estimate of the amount of material required.

**Find out how many tubs you'll need -  
Click on Calculator tab on [azpects.co.uk](http://azpects.co.uk)**

All of our products are manufactured to a professional grade to enable the job to be completed to a high standard, but with the least possible effort by either a professional or home user.

Making life **EASY**

We want to share your hard landscaping images & stories  
[aspects.co.uk](http://aspects.co.uk)



# Block & concrete sealer with sand binder

- High grade Polymer based sealer and sand binder
- Specifically designed for use with concrete and particularly block driveways
- Water-based, non-solvent, non-toxic formulation
- Can be applied to damp surfaces, sand doesn't need to be perfectly dry
- Hard wearing, long lasting finish
- Excellent oil and water repellent
- Weed resistant



## Block paving & concrete sealer

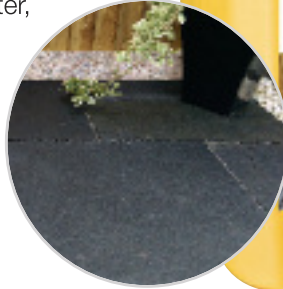
- Effective water based acrylic sealer and protector
- Ideal for concrete paving and concrete interlocking blocks
- Shares many protective qualities of BCS but delivers them in a different way
- Very affordable and available in a 5 & 20 litre bottle
- Impedes Algae and Lichen growth
- Excellent oil and water repellent
- Stain resistant properties
- Hard wearing





# Slate & Limestone reviver

- For use on ALL slate and limestone paving
- Enriches and stabilises colour, especially black
- Clear protective seal against water, oil, grease and stains
- Resists Algae build up



## Suitable for all types of porous Natural Stone

**2 in 1 combination Colour  
Enhancer and Protector**

**Put life into your paths, patios and drives.**

- Easy to use
- Safe to use on all natural stone
- Professional grade
- Enriches and enhances the natural stone colour
- No false shiny finish
- Protective ingredients built in
- Resists staining





# Stone & paving protector

- Ideal for natural stone and concrete
- Water based, non-solvent, non-toxic formulation
- Allows stone to breathe
- Virtually invisible, no skin or shine
- Good anti-stain qualities
- Great value for money



# Superior sealer - tough & long lasting protection



- Designed to give the highest level of protection on natural stone and concrete
- Superior scrub rate, hard wearing and long lasting
- Resists build-up of Algae and Lichen
- Top level stain repellent properties
- Non-solvent, non-toxic formulation
- Probably, the best water based sealer available!
- Virtually invisible on some types of natural stone





solutions

It's Magic!

# Enhanced deck grip

**Safer grip in the wet!**  
MULTIPLE ACTIONS IN 1 BOTTLE

- Improves grip on wet timber flooring and decking
- Seals the wood yet allows it to breathe'
- Excellent water proofing qualities
- Preserves the life of your decking
- Resists algae and fungal growth
- Water based - contains no abrasives
- Virtually invisible



**To clean & rejuvenate decking**  
use **EASY Patio & Deck Cleaner**



rem

# Back to Black Limestone

- Revive faded Black Limestone
- Excellent beading
- Water resistant
- Uniform colour enhancement
- One coat provides a matt finish
- Overcoatable with itself



# Water Seal+

Dries out wet walls and increases thermal qualities of your home.

**Not just a water sealer - it's so much more!**

- Penetrating water repellent for porous brickwork, masonry and timber
- Allows masonry to dry and breathe by letting trapped moisture escape
- For use on vertical and horizontal surfaces
- Invisible coating - no long term textural or colour change



edies



# EASYCare

A range of professional grade cleaners and treatments, many of which use leading edge technology to provide a powerful punch in a small ecologically friendly bottle.

Our Care Range products are either supplied 'ready to use' or in a concentrated formula with a clever 'tip & pour' measure in the head of the bottle.

A real breakthrough in cleaning treatments.

**PROFESSIONAL GRADE**  
**concentrates & ready to use solutions**

**To keep your paving & decking looking great**  
**take a look at the **EASYSeal** range**







# Fast & effortless algae removal

- Remove algae, mould and lichen from paths, patios, walls and wood
- Apply the solution to the surface and leave for a few hours for it to do its job. The green will simply disappear
- 1 bottle clears up to 80m<sup>2</sup> depending on contamination levels
- Licensed by HSE



# Neutralises salt stains from new brickwork & paving

- Gives long lasting results using an organic blend which neutralises and dissolves the salts back into a solution ready to be washed away
- Contamination from existing salts will disappear forever
- Apply using a spray, watering can or brush. Leave for 2 hours and then wash away residue

Additional applications may be required for particularly stubborn areas

**Not all white deposits on substrates are efflorescence. This product will not dissolve harder calcium deposits or lime wash, for these problems use EASY Mortar Stain & Calcium Remover**



# Remove cement residue



- A powerful ecological cleaner to remove cement residue, scale, oxidisation, atmospheric contamination and hard white calcium deposits
- There is no need to neutralise after application!
- Apply and then agitate with a stiff brush, leave for 10 minutes before washing off
- 1 bottle cleans up to 48m<sup>2</sup> depending on contamination levels

For the removal of efflorescence use **EASY Efflorescence Remover<sup>+</sup>**



# Patio & Deck Cleaner

- A fast and effective way of cleaning and rejuvenating paths, patios, decking and even fencing, removing even the most stubborn dirt and grime
- What's more, it continues to work for months after application - the surface looks better a few weeks after application!
- 1 bottle cleans up to 80m<sup>2</sup> depending on contamination levels



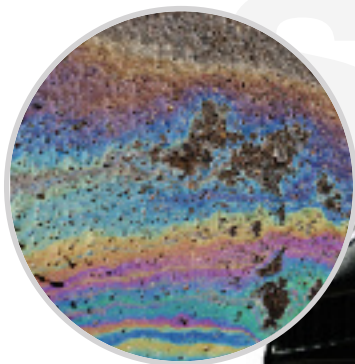
For slip resistant decking use **EASYSeal Deck Magic**

**At Azpects we are truly passionate about our products and have always worked on the basis that customers will only come back for good products at the right price.**

**With excellent customer service, dedicated sales contacts and quick order and delivery turnarounds our aim is to exceed our customer's expectations.**







## Remove oil & grease stains

- A simple to use professional grade cleaner which removes oil and grease stains from hard surfaces such as drives, patios and decking
- Easy to use, non acidic
- Safe for concrete and natural stone including Granite, Marble and Limestone
- Use straight from the bottle

**This is not for dilution**

## You'll never need another cleaner!

- A professional strength general purpose cleaner that makes exterior and interior cleaning easy, fast and safe.
- Excellent results on all UPVC items such as guttering, window frames and conservatories, as well as metal, wood, fibreglass and most painted surfaces
- Great for cleaning plastic, wood and metal garden furniture



**Solutions that *really* work!**

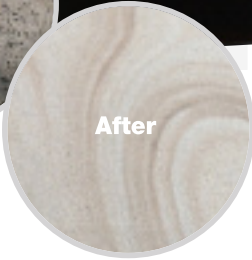


# Black Spot Remover



- Designed to kill Black and White Spot (lichen)
- Kills the spores and makes contamination removal possible
- Regular paving cleaners will not remove Black and White Spot
- As a by-product you'll find that your paving area will be cleaned, revived and invigorated
- Licensed by HSE

**This is not for dilution**



## Remove old sealers & coatings

- Removes old, tired and damaged coatings from paving and driveways to leave a clean surface ready for a new application
- Can also be used as a general paint and varnish stripper

**This is not for dilution**



Take a look at our **EASYSeal** range to protect your paving



# Rejuvenate your brickwork with masonry cleaner



- Excellent rejuvenator for heavily soiled paving, brickwork and masonry
- Fantastic on garden ornaments, monuments and headstones
- Can also be used on fences and decking
- Contains no acids or solvents - will not damage natural/sensitive stone

**This is not for dilution**



# Rust remover

## Simple & *EASY* to use

- Non-acid rust remover converts rust compounds into water soluble solution
- It does not alter the colour or look of the landscaped surface
- Environmentally friendly
- Safe to use on Natural Stone, Wood and Concrete
- A clever use of modern technology and chemistry

**This is not for dilution**

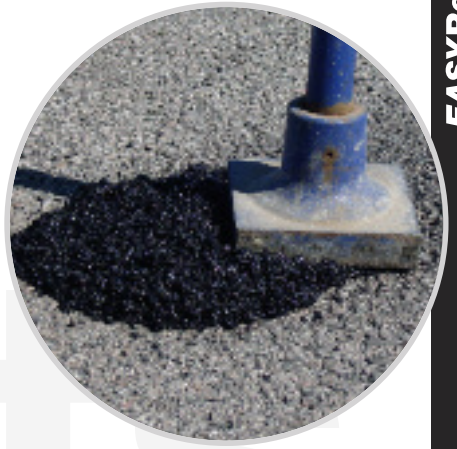


# Pothole & road repairs

## No mixing required 3mm Grade

All weather use -  
frost, rain & snow

- Professional grade - high efficiency modified bitumen mixture
- Works in puddles and standing water
- Suitable for all surfaces and categories
- Ready to use permanent instant repair solution
- Ideal for potholes and utility reinstatements
- Road can be opened immediately after repair
- Binds well with concrete and steel
- Excellent load bearing capacity
- 3mm grade pothole repair is easier to work with and can be used all year round



COVERS  
APPROX  
**1m<sup>2</sup>**  
at 8mm depth



You may want to consider using  
our **EASY Revive+** to seal &  
rejuvenate your driveway



# Hot asphalt, concrete, crack & joint repair

## 1st in UK!

- Advanced hot asphalt/rubberised technology
- Professionally repair and seal cracks in damaged driveways, car parks, paths and flat roofs
- Full repair kit seals an area 12m x 1cm x 1cm
- All you need to repair cracks in asphalt, concrete, wood and stone



Full repair kit contains:  
Kettle with 1.8kg filler, heater, spatula and stands.

Kettle box contains:  
Kettle with 1.8kgs filler, spatula and stands.

0.9kg refills available



Refills available



Contains 1.8kg filler



Incorporating **DSEAL** technology  
DRIVEWAY REPAIR

*The original hot crack repair*



# Sealer adhesive

AVAILABLE IN  
**290ml**  
tube

## keep one handy in the tool kit

- A Professional Grade Sealer Adhesive ideal for bonding and sealing heavy materials such as natural stone, concrete, timber and metal
- Will adhere and seal in damp and wet conditions
- MS Polymer Technology
- Excellent adhesion without primer on most surfaces
- Repairs loose paving stones and wall coping stones etc
- Sticks down artificial grass - Clear formula
- External and internal use
- **Available in White and Clear**

*The landscaper's choice*

## Like a new drive?

Rejuvenator and Sealer for Asphalt and Concrete



- Advanced formula will seal, protect and rejuvenate asphalt and transform concrete and block paving. Leaves driveways and paths with a deep black finish and looking like new
- Can be used in conjunction with **EASY4Cracks** or **EASYDrivefix+** to give an impressive and professional finish
- Can be applied using a roller or brush



# Weed and Stabilisation Membrane

## Just roll it out!

*EASYMembrane 50*

*EASYMembrane 100*



**EASYMembrane 50**

Available in: 1x15m, 2x25m & 2x50m

**EASYMembrane 100**

Available in: 1x15m, 2x25m, 2x50m & 3x50m

- Weed control
- Ground reinforcement
- Beneath Grid/Cell systems
- Under patios, paths, driveways, decking, artificial lawn and more!
- Surface protection for plant pots and tubs

## Superior Mix!

- Modified for use in paving bedding mix
- Minimises cracking, shrinkage and crazing whilst also making mortar easier to handle
- Just add the contents of a sachet into your mix
- Helps in reduction of efflorescence
- Improved frost reduction
- Controlled dosage
- Better bond



**150**  
**PMP**  
sachets



# Shed base, car space, roof garden & more!

## Click it together - **EASY**

- Versatile interlocking base for sheds, greenhouses, cabins and driveway installation
- Suitable for any areas needing ground or grass protection
- Infill with gravel, sand, soil or grass
- Filled **EASYGrid** will support up to 380 tonnes per square metre
- Soil erosion prevention
- Eco-friendly and lightweight
- Quick and easy to install
- Lightweight, slip resistant, crack proof, frost and UV resistant
- Fully recyclable
- Maintenance free



Available in Black, White and Green

*'Fit it and forget it'*



1m<sup>2</sup> = 9 **EASYGrids**

Available in a handy 2m<sup>2</sup> Retail Pack or by the metre<sup>2</sup> (50m<sup>2</sup> on a pallet)



## Making it **EASY** reading

Take a look at our NEWS page  
[www.azpects.co.uk](http://www.azpects.co.uk)



news

features

stories

Your local supplier

## Making life **EASY**

[www.azpects.co.uk](http://www.azpects.co.uk)

